

SALIM HABIB UNIVERSITY

Tracks Offered

01 Developmental Psychology

02 Positive Psychology

03 Cognitive Psychology

04 Health Psychology

05 Industrial-Organizational Psychology

06 Clinical Psychology


Industrial Advisory Board (IAB) & Platforms


- Comprise mental health and wellness professionals including psychology experts and academicians, consultants, hospital and clinic personnel, HR counsellors, career placement experts, and health department specialists.
- Guide students to professional excellence, fostering an in-depth understanding of industry trends and best practices.
- Foster students' technical and professional development, ensuring their ability to secure job placements and entrepreneurial opportunities.
- Provide valuable networking prospects for students, connecting them with industry leaders and potential employers.
- Promote collaboration between academia and industry, ensuring the curriculum stays relevant and aligned with current industry needs and advancements.

Placements & Careers

- Psychologist
- Educational Psychologist
- Human Resources Specialist
- Healthcare Psychologist
- Community Services Counselor
- Research Psychologist
- Human Services Manager
- Psychological Consultant
- Education and Training Specialist
- Counselor
- Wellbeing Coach
- Family and Relationship Counselor
- Therapy Aide
- Researcher and Academician

SALIM HABIB UNIVERSITY

 03162754504

 NC-24, Deh Dih, Korangi Creek, Karachi 74900
UAN: 021-111-248-338

Visit us: www.shu.edu.pk

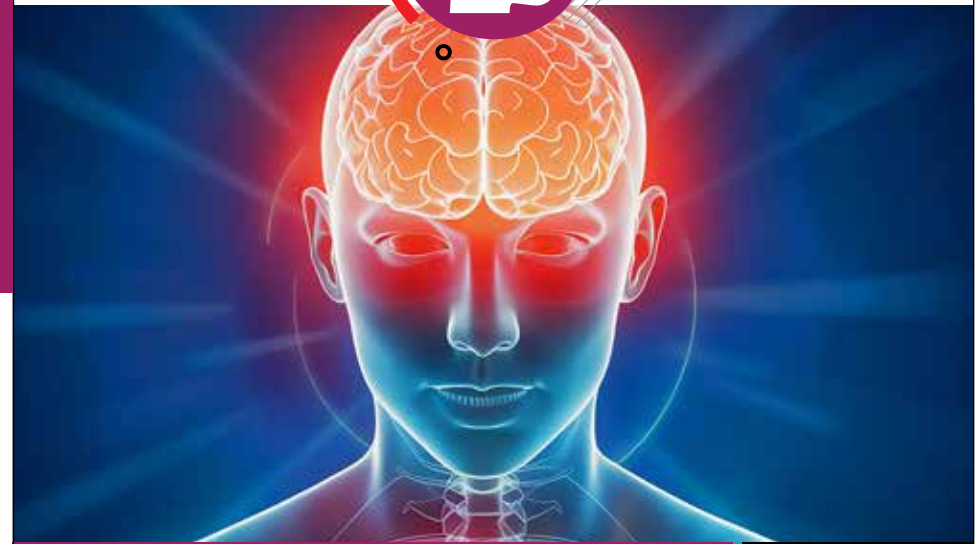


SALIM HABIB UNIVERSITY

Faculty of Management Sciences

BS Psychology

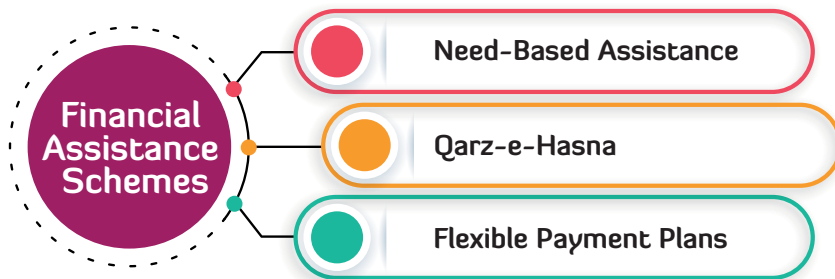
Unveiling the human mind to enhance mental health and well-being



Chartered by the Government of Sindh - Recognized by
HEC, Sindh HEC/CIEC - Accredited by PCP, PEC & NCEAC



- International standard cutting-edge curriculum
- Real world applications and research
- Experiential and project-based learning
- Career-focused marketable and entrepreneurial skills
- Personalized industry mentorship for nurturing entrepreneurial ideas
- Opportunities for international exposure and mobility through competitions and exhibitions
- Support and guidance from highly experienced and well-qualified faculty members



Scholarships and Financial Assistance

We offer generous scholarships and financial assistance to ensure that no student is denied admission or leaves due to financial ineligibility or economic constraints.

Forms available on the website www.shu.edu.pk

Why Psychology?

- **Holistic Understanding:** Gain an in-depth understanding of psychological principles combined with wellness practices, with focus on areas like cognitive psychology, positive psychology, and holistic health.
- **Theoretical & Practical Knowledge:** Become well-versed in both psychological theories and practical applications in promoting overall well-being.
- **Interdisciplinary Expertise:** Benefit from a curriculum that integrates psychology with other disciplines, providing a holistic understanding.
- **Industry-Integrated Learning:** Gain hands-on experience through internships and practical training placements in various psychological settings.
- **Networking & Collaboration:** Engage with a diverse community of students and professionals, fostering networking and collaboration.



Program Structure



Eligibility

- Minimum 50% marks in HSSC or equivalent qualifications recognized by the Inter Board Committee of Chairmen (IBCC)
- Clear the Aptitude Test and Interview at Salim Habib University